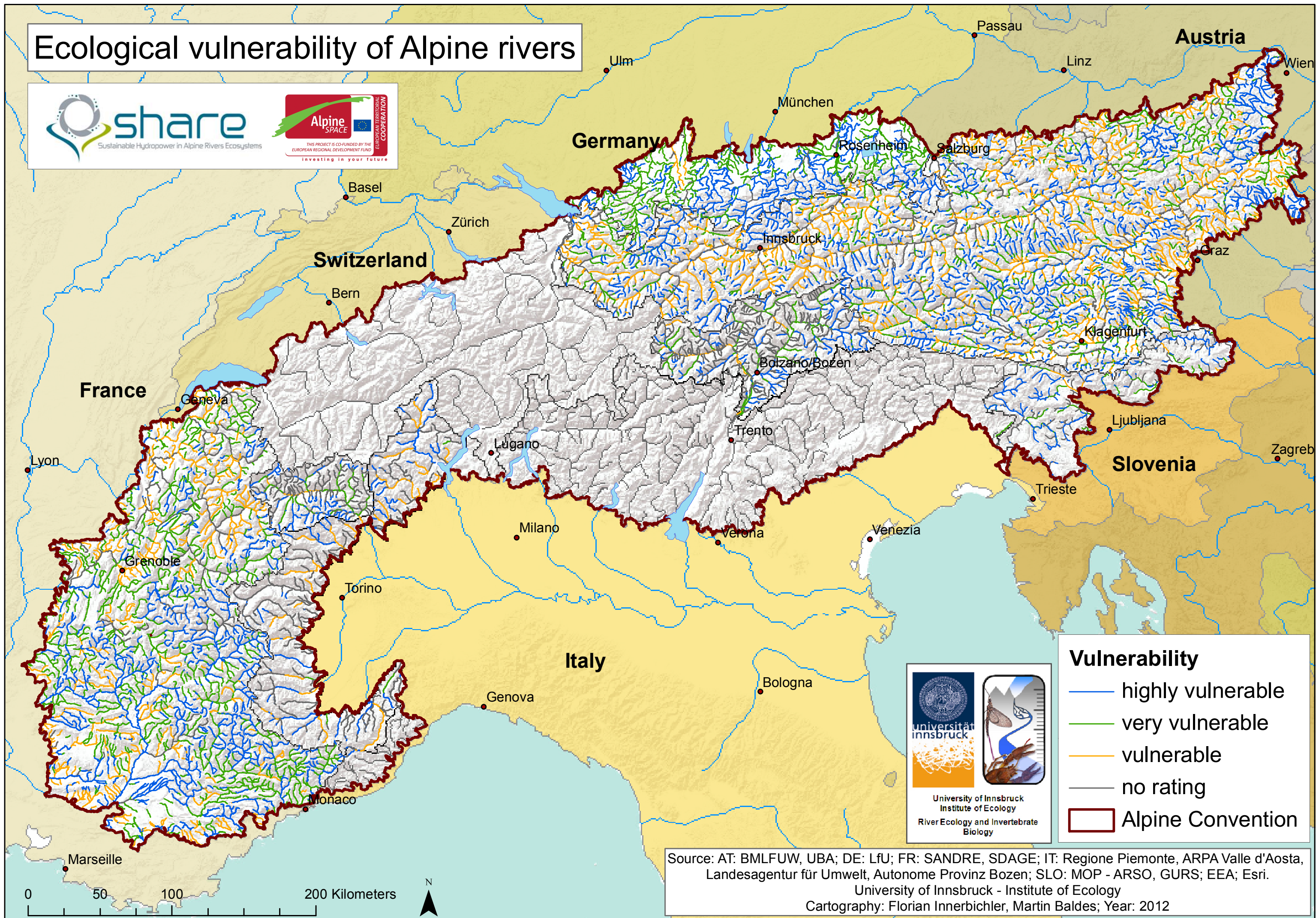


Ecological vulnerability of Alpine rivers



Vulnerability

- highly vulnerable
- very vulnerable
- vulnerable
- no rating
- Alpine Convention



Source: AT: BMLFUW, UBA; DE: LfU; FR: SANDRE, SDAGE; IT: Regione Piemonte, ARPA Valle d'Aosta, Landesagentur für Umwelt, Autonome Provinz Bozen; SLO: MOP - ARSO, GURS; EEA; Esri.
 University of Innsbruck - Institute of Ecology
 Cartography: Florian Innerbichler, Martin Baldes; Year: 2012